

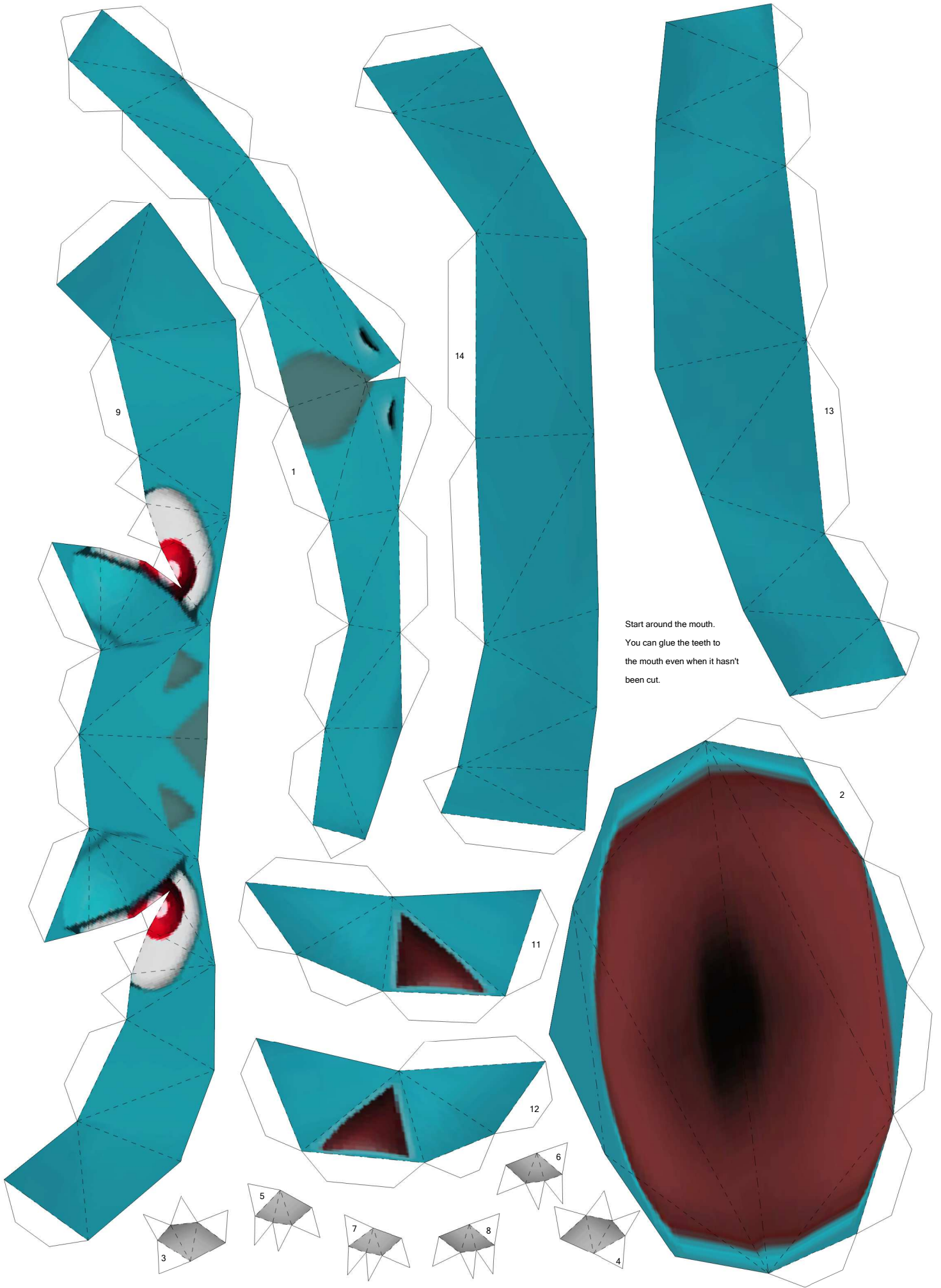


# M Venusaur

by Brandon

Build by LuIS

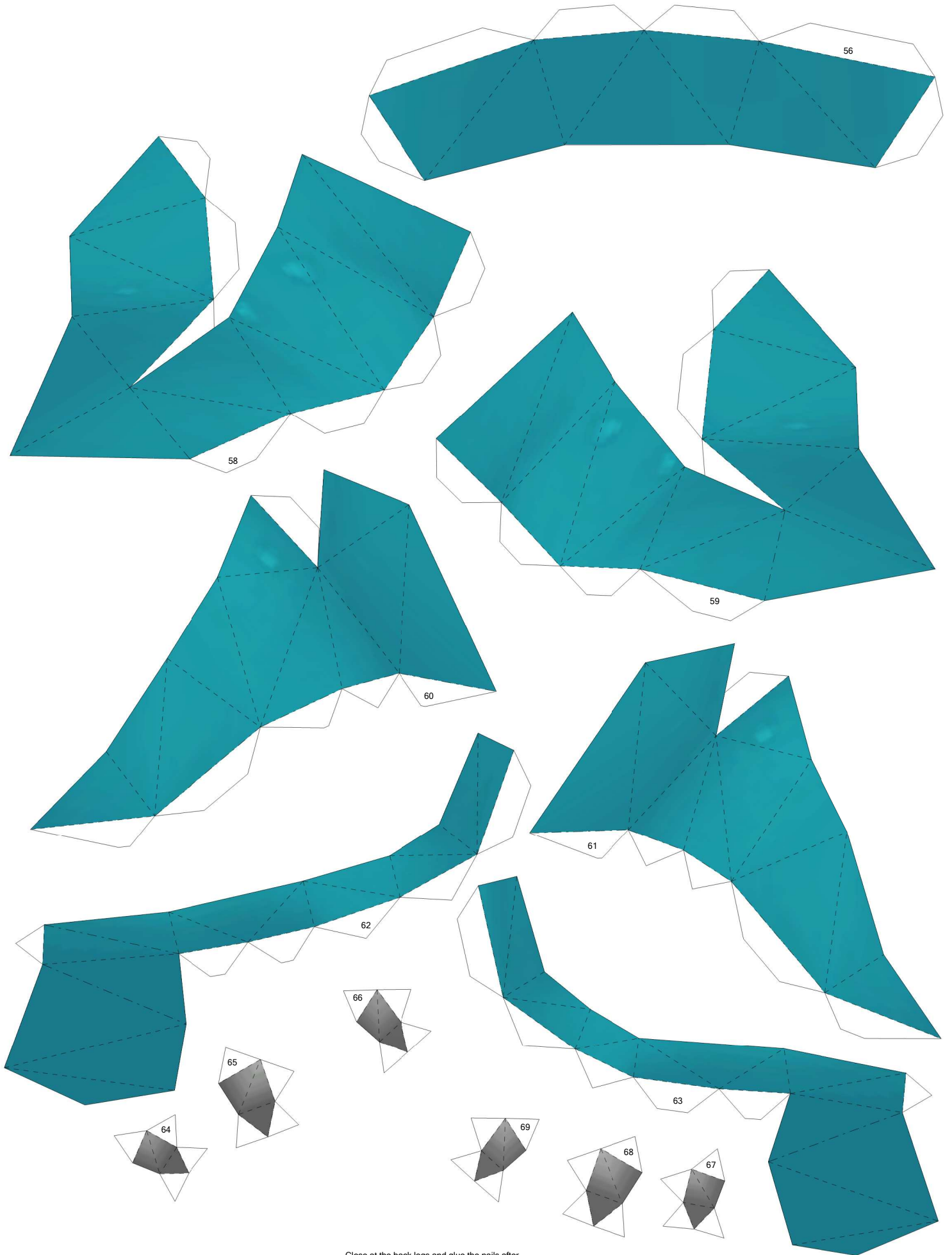
**Paper Pokés**  
*www.pokemonpapercraft.net*



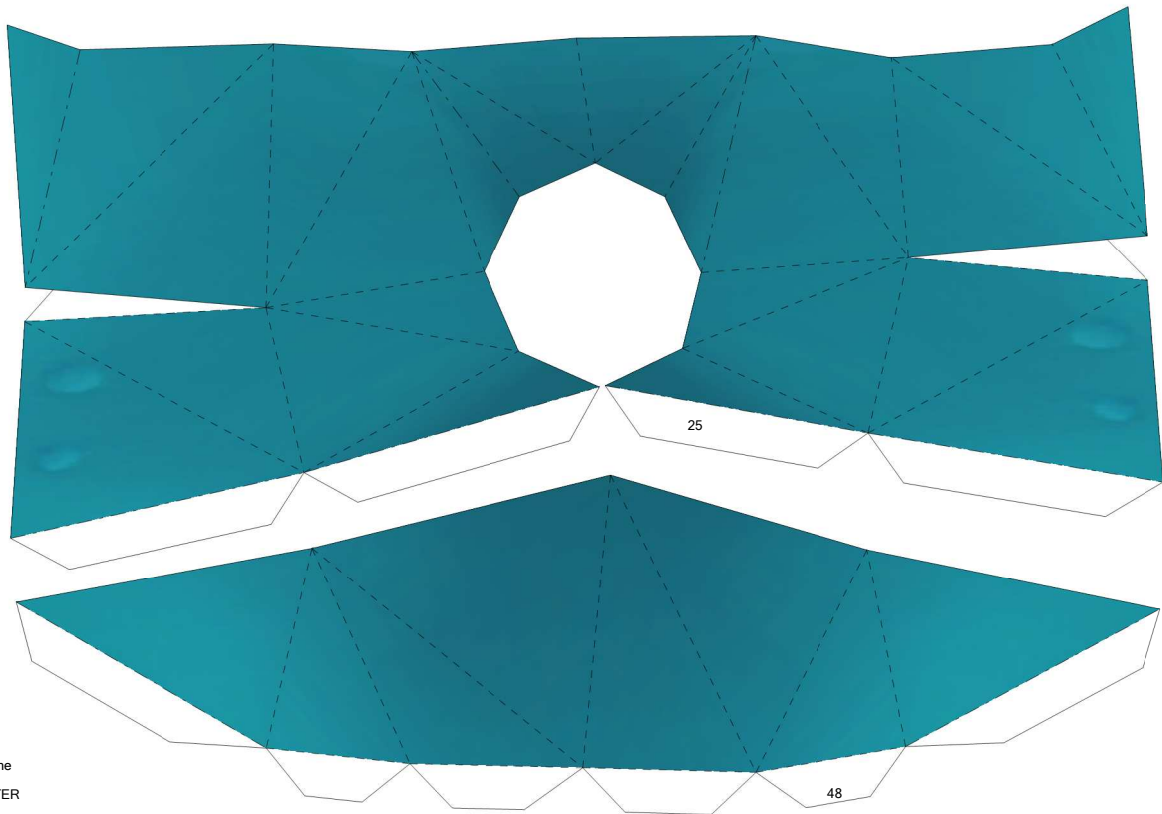
Start around the mouth.  
You can glue the teeth to  
the mouth even when it hasn't  
been cut.





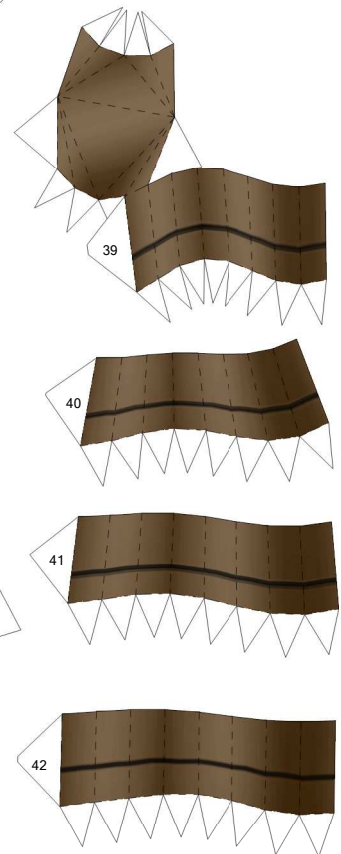
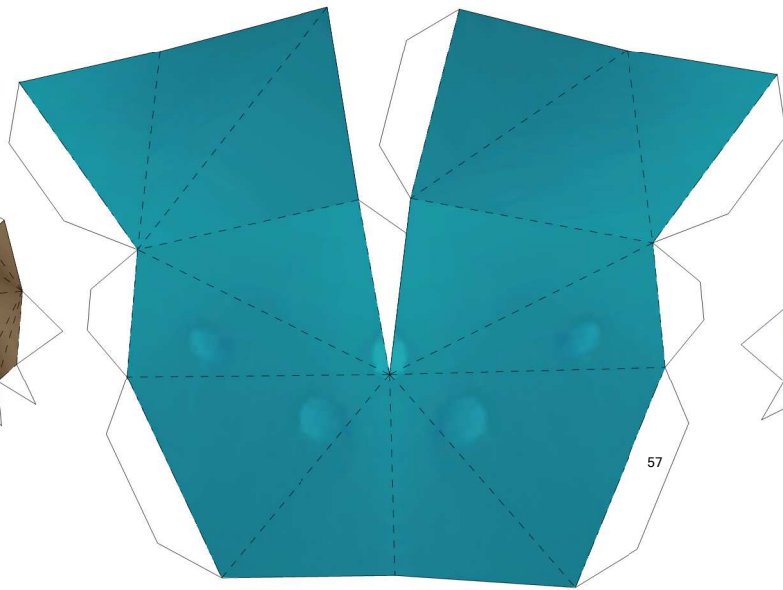
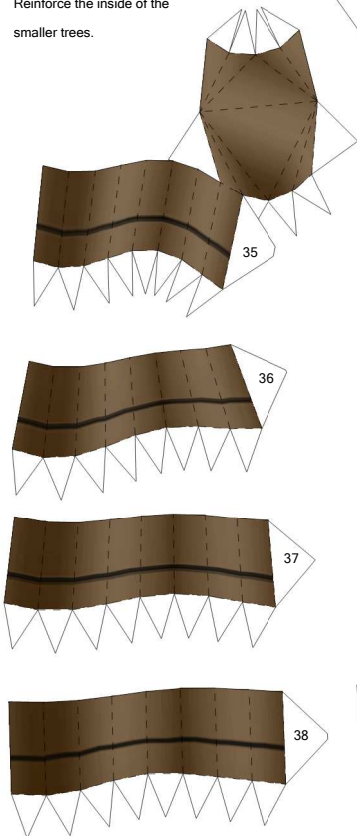


Close at the back legs and glue the nails after.

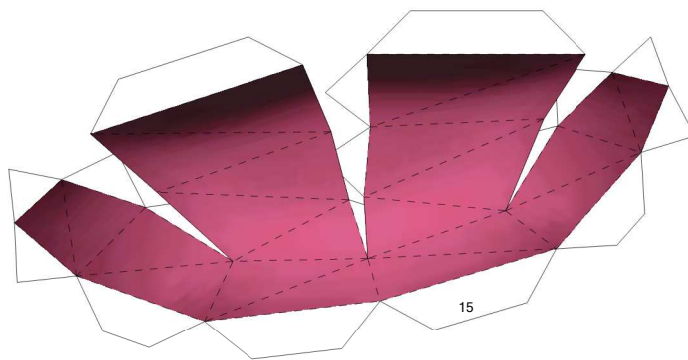


You MUST reinforce the inside of piece 25 AFTER the trees are glued to the top of the model.

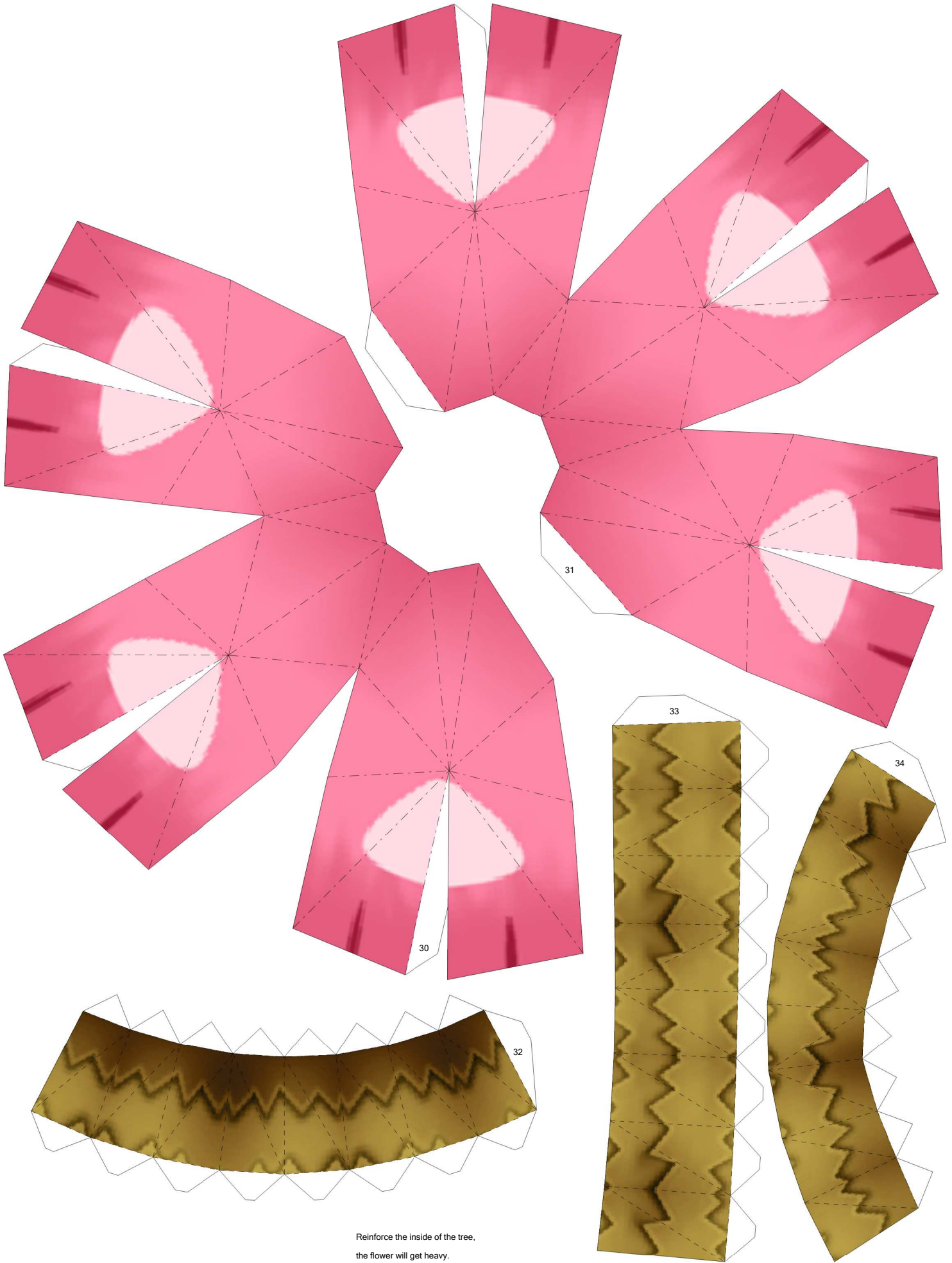
Reinforce the inside of the smaller trees.



Glue the tongue after the face is built.

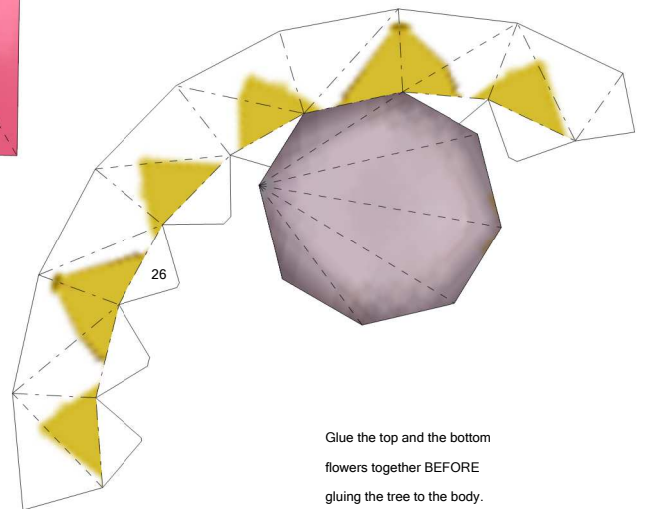
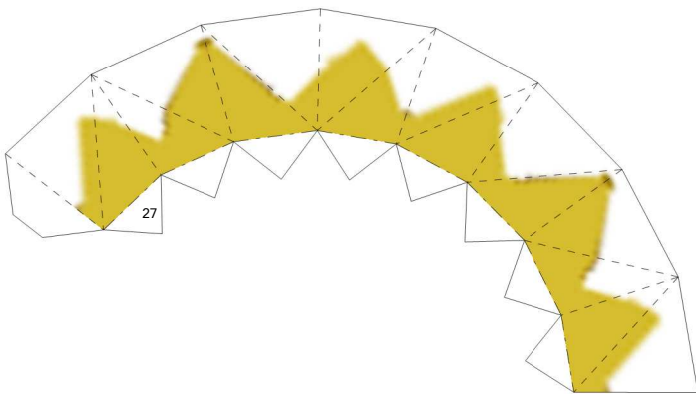
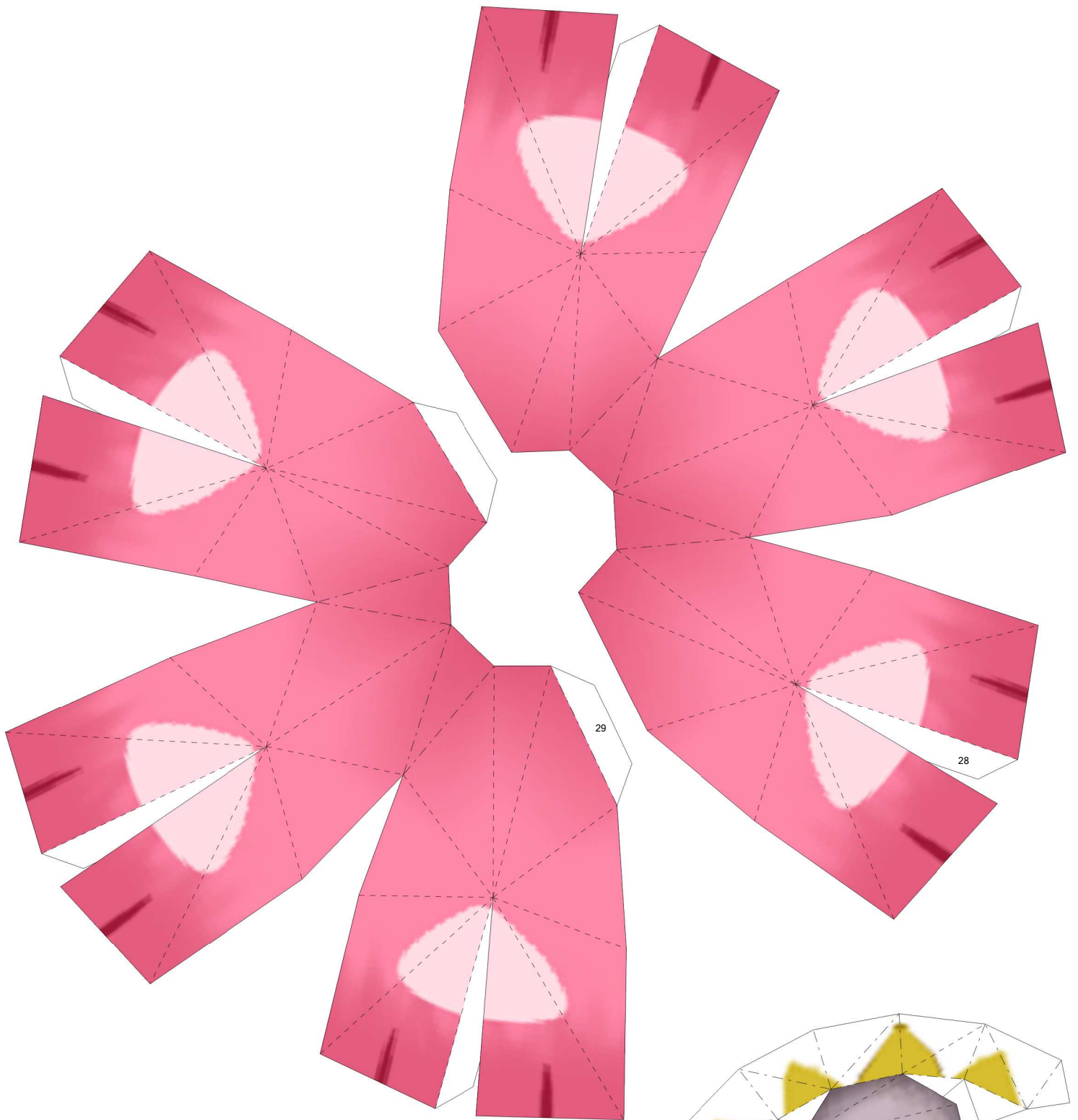


Tongue

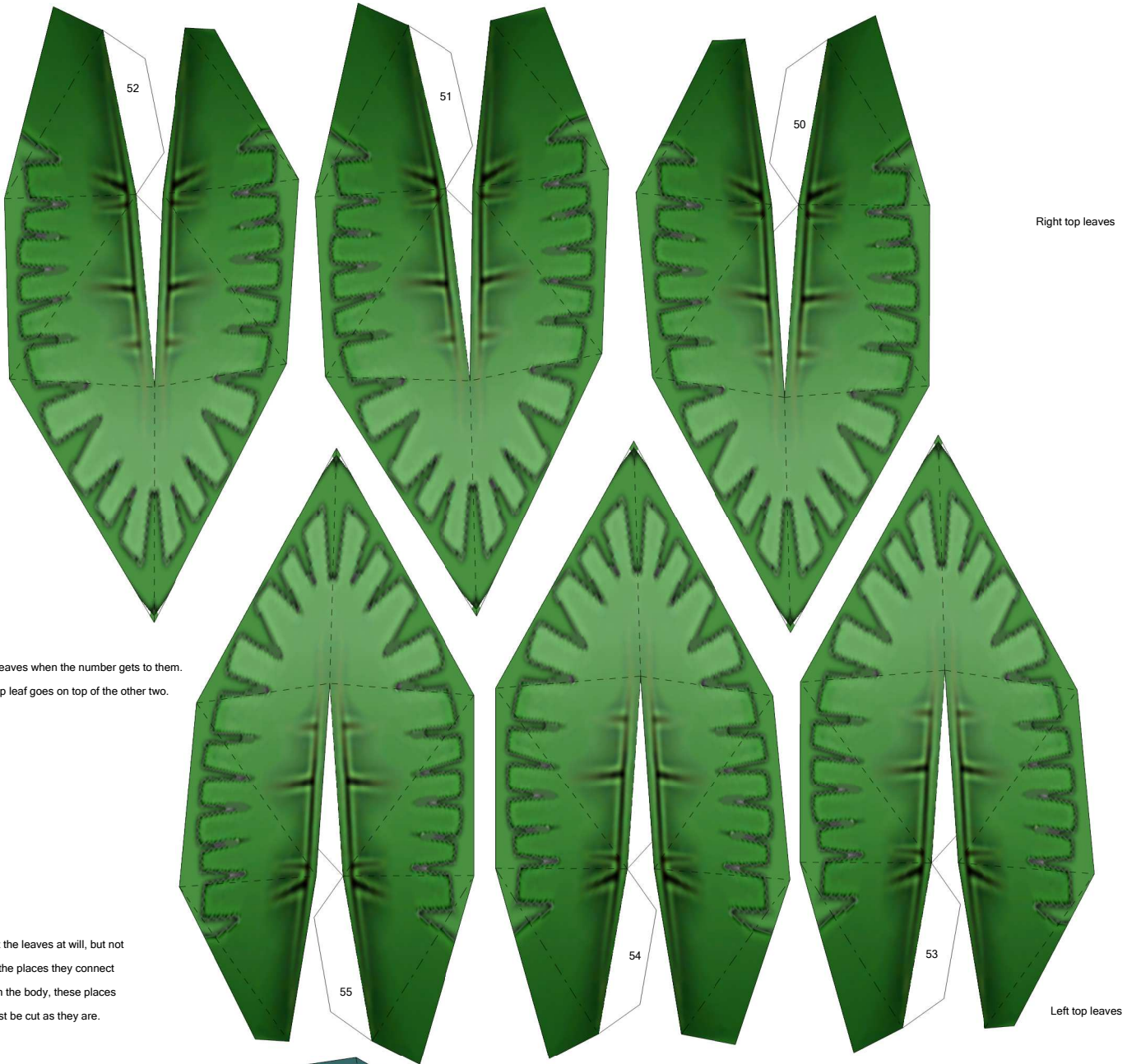


Reinforce the inside of the tree,  
the flower will get heavy.





Glue the top and the bottom  
flowers together BEFORE  
gluing the tree to the body.

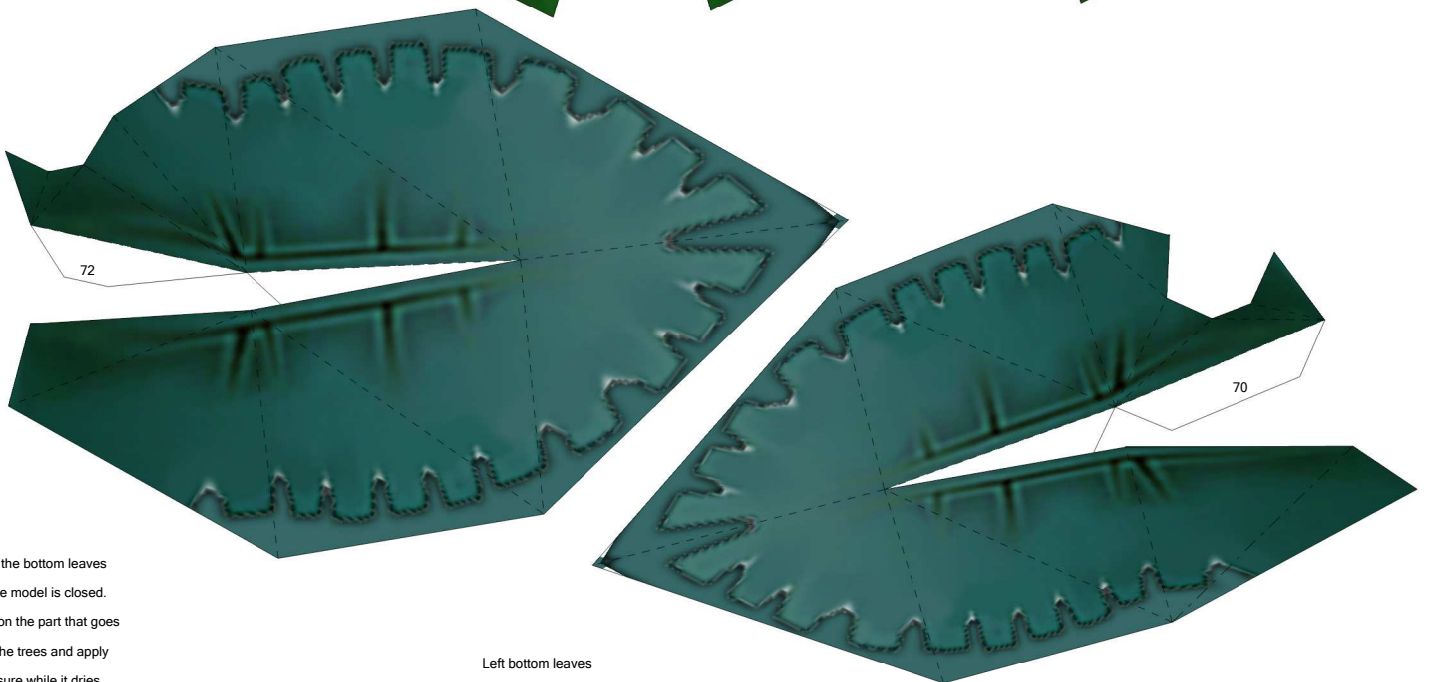


Right top leaves

Glue the top leaves when the number gets to them.  
The middle top leaf goes on top of the other two.

Cut the leaves at will, but not on the places they connect with the body, these places must be cut as they are.

Left top leaves



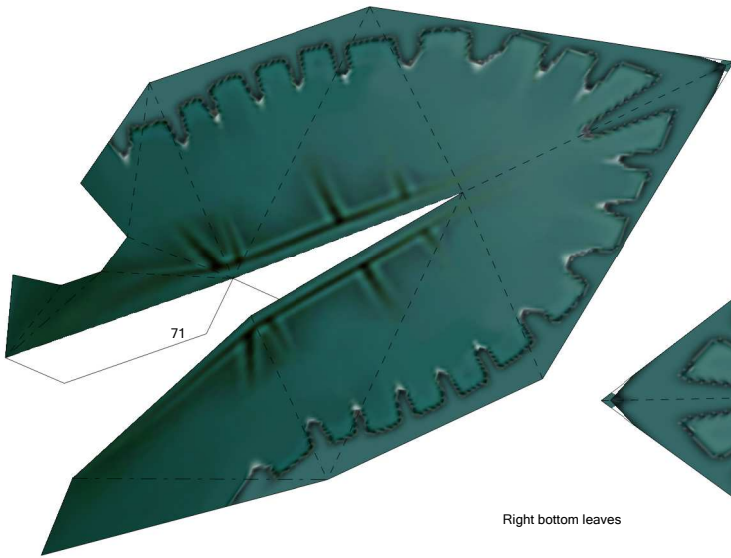
Left bottom leaves

Only glue the bottom leaves AFTER the model is closed.  
Use glue on the part that goes closer to the trees and apply some pressure while it dries.

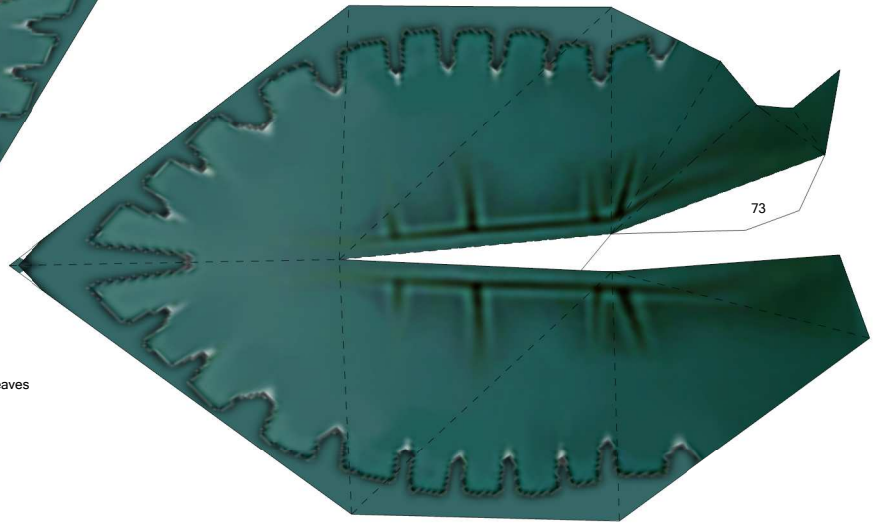




Print on the back of the page with the top leaves



71



73

Right bottom leaves



46

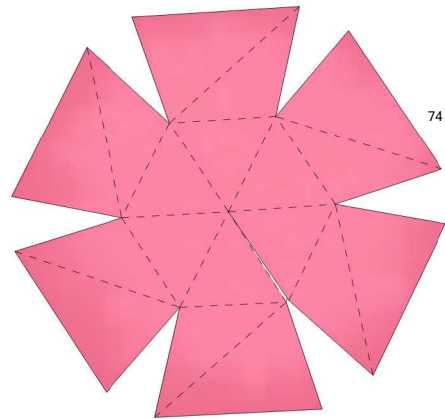
43

44

45

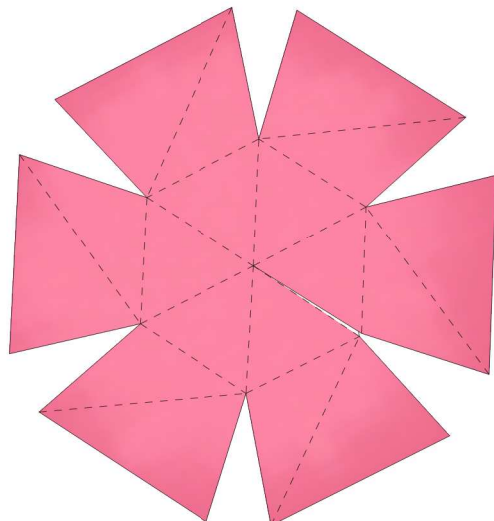
43 is the front right  
44 is the front left  
45 is the back right  
46 is the back left

This order MUST be followed.



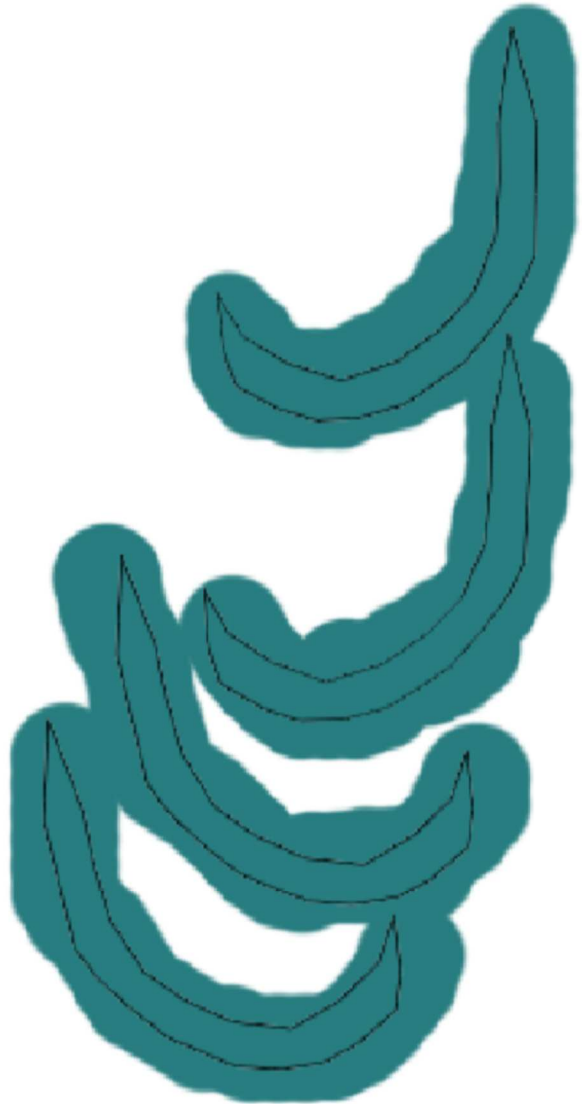
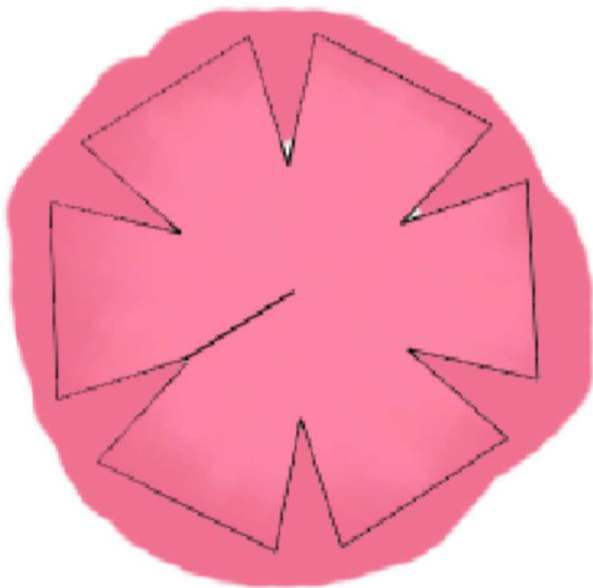
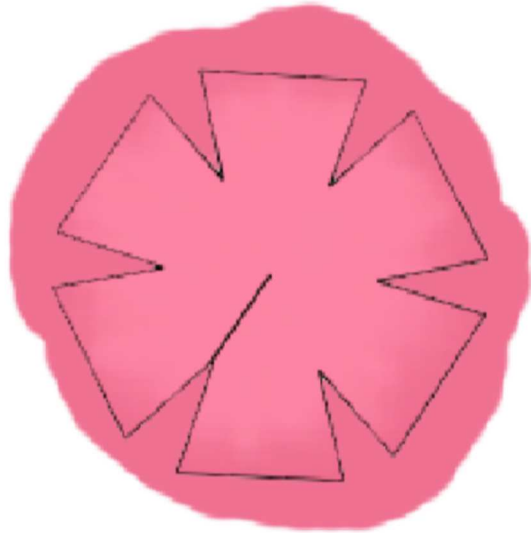
74

Back flower



47

Head flower



Print on the page with the smaller flowers.